



PA23R Flachantenne für 23cm (1240-1320 MHz)

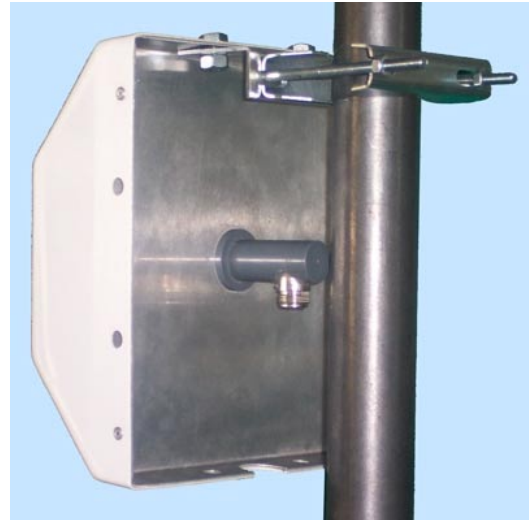
directional antenna for 23cm (1240-1340 MHz)

Best.Nr. 18032



Gekapselte Flachantenne für Außenmontage mit 12,5 dBi Gewinn. Lieferung mit Mastschellen für 30-65mm Mastdurchmesser.

Encapsulated outdoor antenna with radome with a gain of 12.5 dBi. Supplied with mast bracket suitable for 35 to 65 mm dia.



im Bild mit vertikaler Polarisation montiert

vertical polarization if mounted as shown

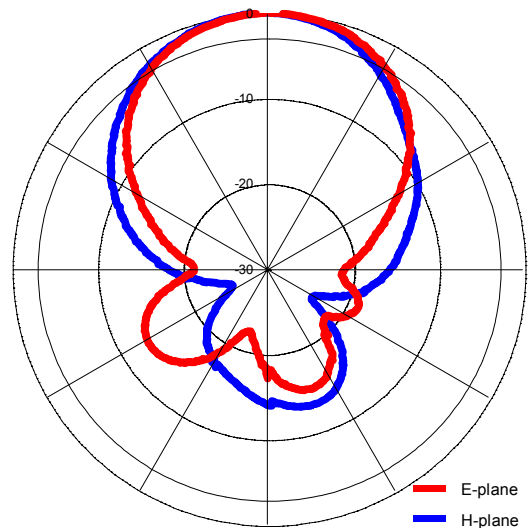
Electrical parameters

Frequency range	1240 – 1320 MHz
Gain (at center freq.)	12.5 dBi
VSWR	<1.5
3dB beam width	E: 55° H: 65°
Front-to-back ratio	>15 dB
Impedance	50 Ω
Max input power	50 W
Polarization	Linear (V or H)

Mechanical parameters

Cover material	White PVC
Elements material	Copper, Aluminium
Holder material	Aluminium
Mast clamp	30 – 65 mm
Temperature	-30 °C - +60 °C
Connector	N _{female}
Dimensions	210x210x110 mm
Weight	700 g

Radiation pattern:



WiMo Antennen und Elektronik GmbH

Am Gäxwald 14, D-76863 Herxheim Tel. (07276) 96680 FAX 9668-11

<http://www.wimo.com>

e-mail: info@wimo.com