

| [Home](#) | [Antennas](#) | [For Sale Ads](#) | [Computing](#) | [Forums](#) | [Links](#) |

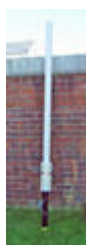


Radio Ham's on the Web

| [Clubs](#) | [SSTV](#) | [Competition](#) | [HF](#) | [VHF](#) | [Guest Book](#) |

VENUS 80 EH Antenna for 80m

With the arrival of the long winter nights and sunspot minima, 20-10m bands are closed by the time I get home from work. After one month of only operating on the weekends, I had to find a solution that would allow me to operate during the week. This meant putting an antenna up for either 160, 80 or 40m. I decided to put up something for 80m because I have only ever made a handful of contacts around Europe on this band in the 13 years I have been licensed. Space for an antenna of this size is limited, so my options would be a vertical or a Magnetic loop. A thorough search of the internet provided me with a number of reviews for limited space antennas for 80m including the VENUS 80 EH Antenna from [Arno Elettronica](#).



I sent an email using the contact details from their web site and received a quick response from Julie Fabri. Julie sent me the current antenna specifications and purchase price including delivery.

The points that made me decide to order were:

- Covers 3.500-3.800MHz (single feed point)
- Lightweight (PVC/Fiberglass construction)
- Single support needed
- Omni directional
- 170KHz @ 2:1 VSWR (350 @ -3db)

I had a little trouble connecting the the antenna to the 2in stub mast on the tower so I had to replace the supplied mounting hardware (pictured right). I used a stainless steel plate and 4 U-bolts similar to the mounting arrangement on a Cushcraft vertical.



Once the antenna was firmly attached to the tower at around 7.7m above the ground when the tower is raised. I ran a new length of Military spec RG58 coax with new PL259's and connected everything up. The recommended coax length to use is half a wavelength or multiples of. I have around 60 feet of coax from the antenna to the shack.



Should you need or want to adjust the center band resonance you can do this by adjusting the copper adjustment sleeve. The antenna tunes the entire band with the help of an ATU. The internal auto ATU on my IC-7400 doesn't have any problems tuning this antenna.

I have been using the antenna for about a month (Dec 2003), but I have been told that the band hasn't been in good shape. Though I haven't had any problems working around Europe and not



The antenna is very small 248cm x 8cm (12.5cm diameter at base, limited to 30cm length), weighs 4.9Kg and boasts >95% efficiency.

The antenna arrived 4 days after shipping from Italy and I was able to track its progress on the internet. The Venus 80 was complete, pre tuned and ready to go straight out of the box.

much trouble breaking Pile-ups to the East and midwest USA with 100w. The antenna specification say that it will easily handle the UK's limit of 400w with a maximum of 2000w SSB/CW and 500w RTTY/AM.

I am very please with the build quality and performance of the antenna so far. Though I don't have another 80m antenna that I can compare performance with, but it certainly works. Its easily installed and requires no radials. The service from Arno Elettronica was first class and I am considering the purchase of the Venus 160 for top band..... once I find somewhere to put it!

Watch this page for progress and updates.

The <http://www.radiohamsontheweb.co.uk> Web site design by [CNL Computer Services](#)
Copyright © 2003 by Christopher Neil Llewellyn. All Rights Reserved.
Please read the [Disclaimer](#)